

## Breezhaler

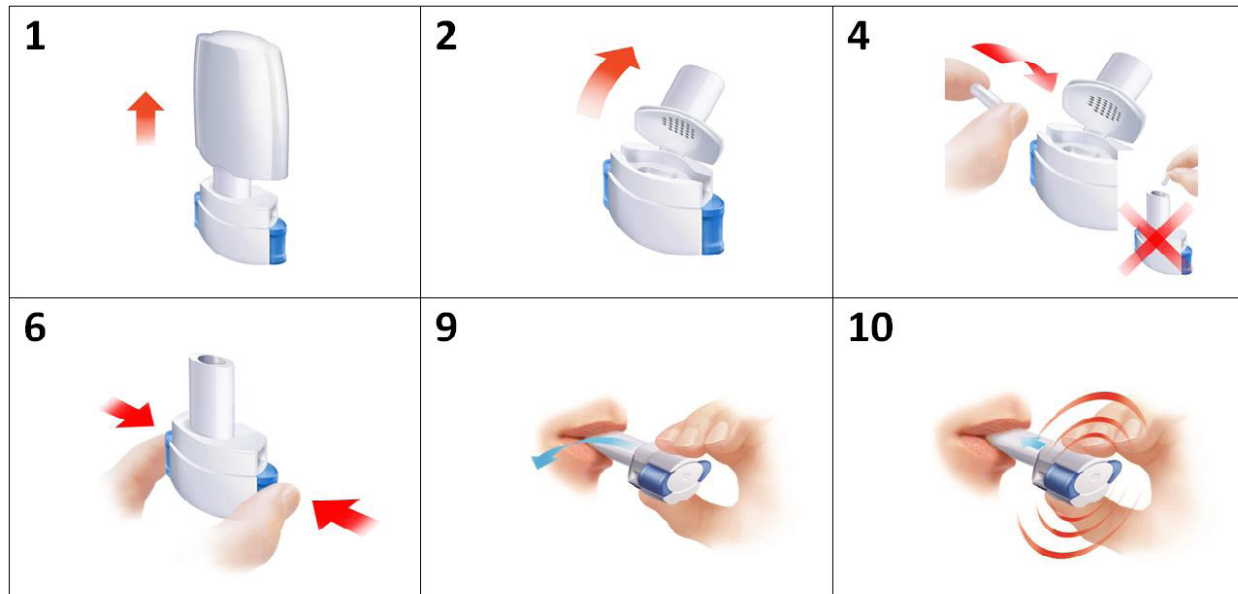
### TECHNIQUE

1. Pull off the cap.
2. **Open inhalation device:** Hold the base of the inhaler firmly and tilt the mouthpiece to open the inhalation device.
3. **Prepare the capsule.**
4. **Insert the capsule:** Place the capsule into the capsule chamber.
5. **Close the inhalation device.** You should hear a 'click' if it is closed properly.
6. **Pierce the capsule.** Do not press the piercing buttons more than once.
7. Release the buttons fully.
8. **Breathe out. Never blow into the mouthpiece.**
9. Hold the inhaler such that that buttons are place on the left and right.
10. Place the mouthpiece in your mouth and close your lips firmly around the mouthpiece. **Breathe in rapidly but steadily, as deeply as you can.**
11. **Note:** As you breathe in through the inhalation device, the capsule spins around in the chamber and you should hear a whirring noise.
12. **Hold your breath** for at least 5-10 seconds. Then breathe out.
13. **Remove the capsule:** Open the mouthpiece again, remove the empty capsule by tipping it out, and discard it. Close the inhalation device and replace the cap.
14. **Mark daily dose tracker:** Put a mark in today's box if it helps to remind you of when your next dose is due.

[www.livingwellwithcopd.com](http://www.livingwellwithcopd.com)

## Breezhaler

### TECHNIQUE - continued



#### Maintenance and Cleaning

- Never wash the inhaler with water. Always keep the inhaler and capsules in a dry place.
- Always use the new inhaler that comes with your new medication pack (use a new inhaler each month).
- Do not store the capsules in the inhaler. Capsules must only be removed from the blister pack immediately before use.

[www.livingwellwithcopd.com](http://www.livingwellwithcopd.com)