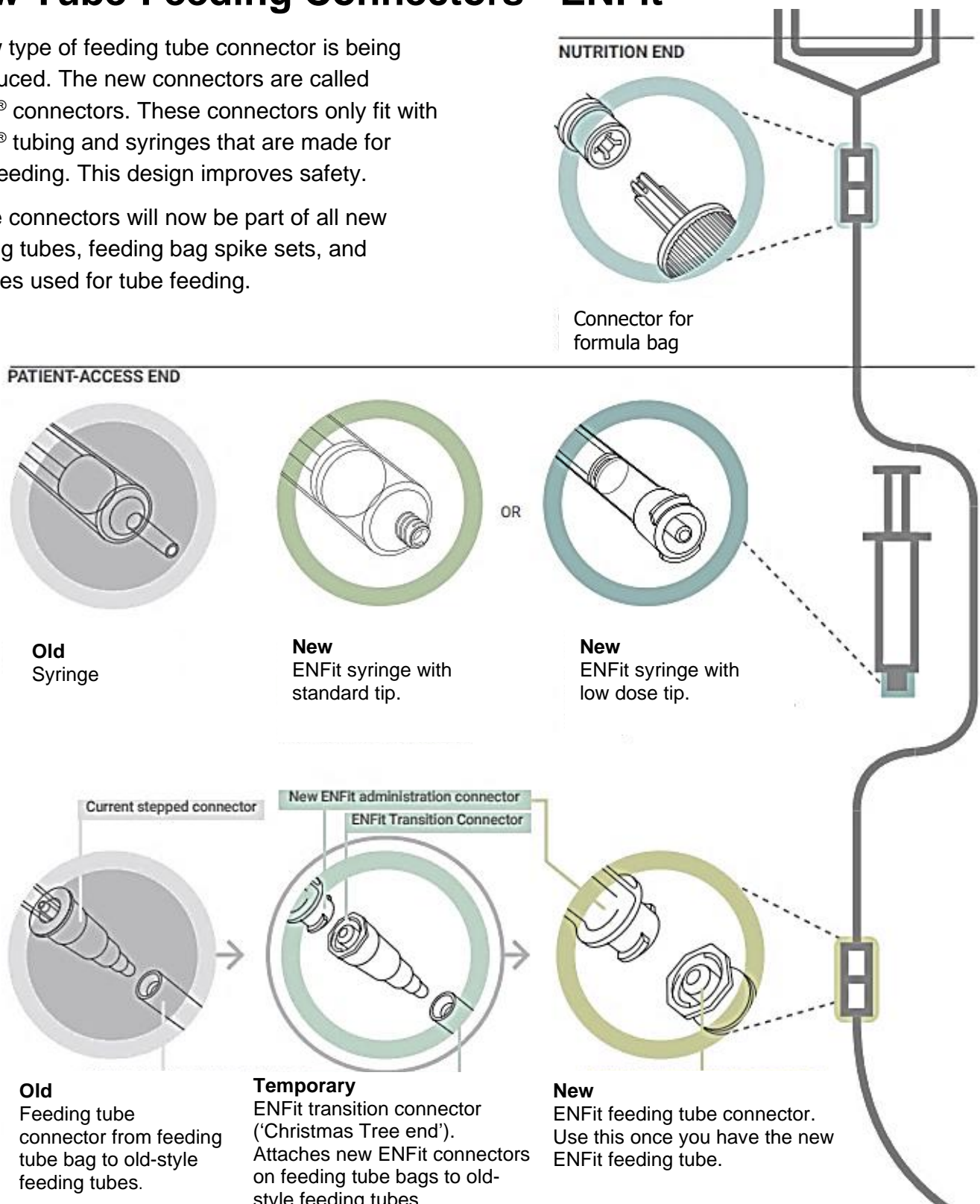


New Tube-Feeding Connectors - ENFit®

A new type of feeding tube connector is being introduced. The new connectors are called ENFit® connectors. These connectors only fit with ENFit® tubing and syringes that are made for tube feeding. This design improves safety.

These connectors will now be part of all new feeding tubes, feeding bag spike sets, and syringes used for tube feeding.



How is ENFit® different?

- The connections **twist** together.
- The connectors only fit together with ENFit® tube feeding equipment.
- Some of the equipment is purple.
- The connectors need to be cleaned at least once per day. Scan this QR code or search for 'Taking Care of Your ENFit® Connectors' on the [Fraser Health Patient Education](#).



What does this mean for me?

Before you get an ENFit® tube, you can do the following with your existing tube:

- Continue to use catheter tip syringes.
- If needed, use ENFit® transition connectors ("Christmas tree endings") to connect formula bags and spike sets to existing tubes.

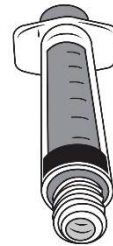
Ask the doctor who inserted your feeding tube when you can expect to change to an ENFit® tube. Keep in mind this date could change.

Once you have a new ENFit® feeding tube placed, you will need to use ENFit® syringes. You will no longer need a transition connector.

What does ENFit® equipment look like?



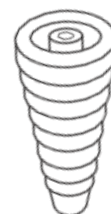
ENFit® feeding tube



ENFit® syringe



ENFit® syringe twisting into an ENFit® tube



ENFit® transition connector ('Christmas tree ending')

Images used with permission from stayconnected.org